

# PHEROCON<sup>®</sup> CMDA COMBO-P+AA Lures

## Assembly Instructions for use with PHEROCON<sup>®</sup> VI Delta Trap

- FOR USE IN MATING DISRUPTED AND CONVENTIONAL ORCHARDS -

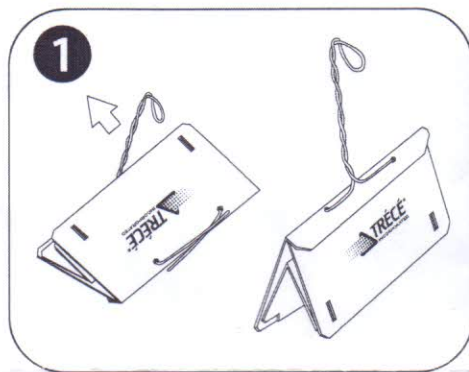
For: Codling Moth, *Cydia pomonella*

### Materials Needed:

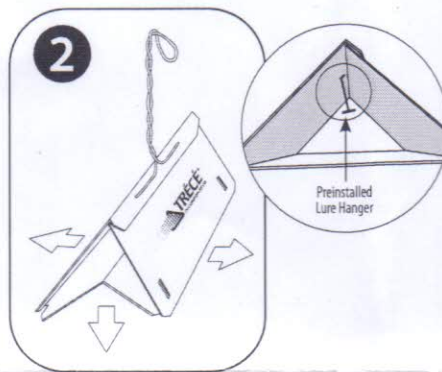
- A. PHEROCON VI Delta Trap with Preinstalled Lure Hanger
- B. PHEROCON VI Delta Liner
- C. CMDA COMBO-P Lure
- D. AA Lure



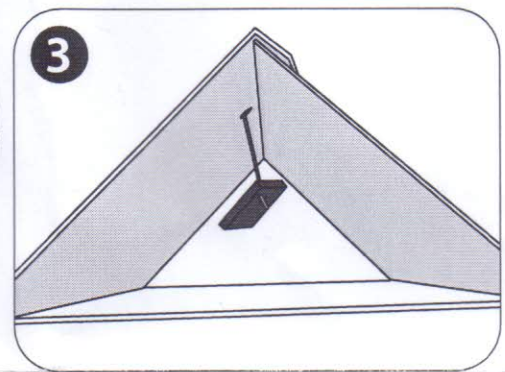
**NOTE:** If using unassembled trap, see instructions that were included with that trap.



1. Straighten wire that is wrapped around trap.



2. Pull center of trap down to form a triangle.

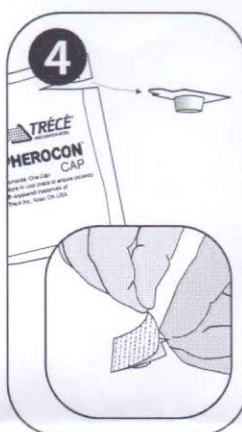


3. Hang CMDA COMBO-P Lure on preinstalled lure hanger.

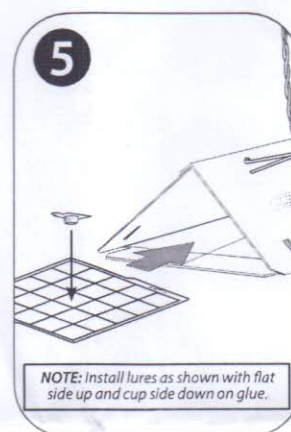
### Hanging the lure without a lure hanger

**3A.** Straighten the wire hanger in such a way as to push it partially back through the hole.

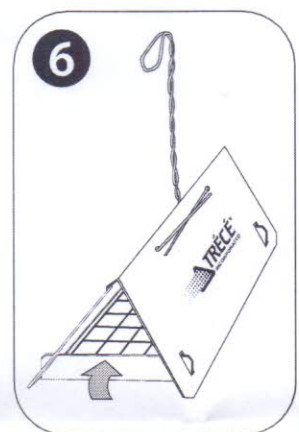
**3B.** Utilize the slot in the CMDA COMBO-P Lure to slide it onto the wire. Pull and bend the wire back into place.



**4.** Remove **barrier film** from the back of AA Lure.  
**NOTE: DO NOT** peel or puncture plastic film underneath.



**5.** Open glued liner.  
**Place AA Lure (cup side on glue) in the center of the glued liner.** Holding the adhesive-free tab, place liner in trap as shown.



**6.** Fold one end of the trap inward until tabs lock into slots. Repeat on other end. Trap is now complete and ready to hang.

**USE ONLY ONE SET OF PHEROCON CMDA COMBO-P+AA LURES PER TRAP. ALWAYS WEAR GLOVES WHEN INSTALLING LURES; WASH HANDS AFTER USE.**

Visit our website: [www.trece.com](http://www.trece.com) or call 1-866-785-1313

Please see Trécé's IPM Partner<sup>®</sup> Guidelines for further instructions.

#### STORAGE RECOMMENDATION:

Keep unopened factory-sealed packages in a cool place (<75°F / 24°C maximum) for short periods until used. Refrigerate or freeze unused packages. Refrigerate or freeze unopened packages to carry over for annual storage.



INSECT PHEROMONE & KAIROMONE SYSTEMS